

HYDRO CHECK

IHC 24 / 31 / 38 / 24 STEP CHECK UNIT(S) Series



IHC 24 Series



IHC 31 Series



IHC 38 Series



IHC 24 Step Check Unit(S)

IHC Series

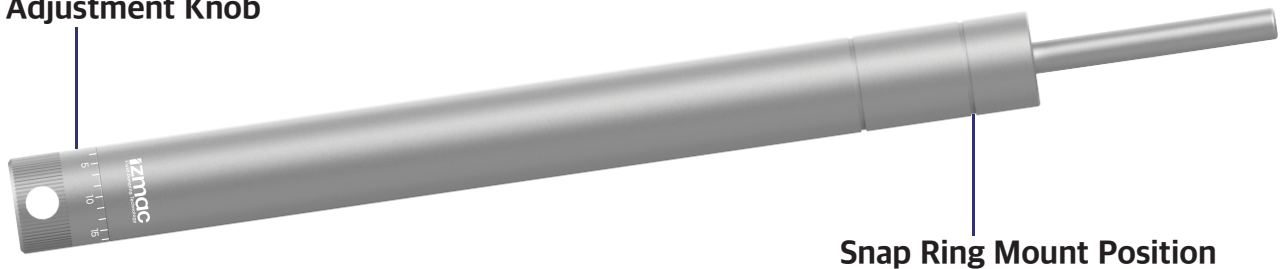
HYDRO CHECK

IHC ensure ideal speed control for pneumatic drills, secondary machining lathes, milling tables, or any other equipment requiring constant, long-term movement speed control. With Controlling objects of various weights at a constant speed according to stroke protects equipment and extends the life of machine tools.

Precision-manufactured cylinders and pistons move smoothly at a constant speed throughout the entire stroke.

Maintenance-free and easy to install, IHC hydraulic feeding control unit features its own precisely controlled hydraulic fluid.

Adjustment Knob



Snap Ring Mount Position

*Please adjust the dial properly to the required conditions for the application.

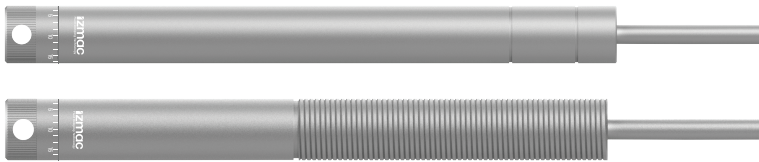
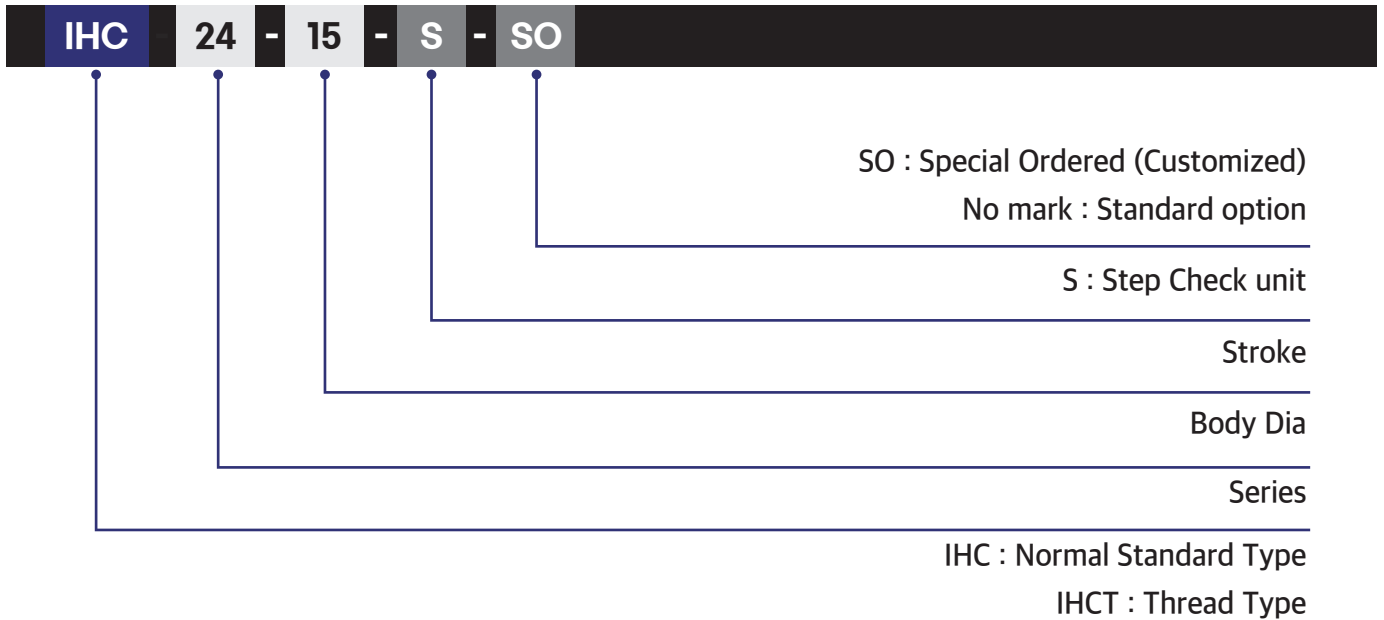
Features

- It can be used for a long time as it is made of corrosion-resistant material and its enhanced durability ensures a long life cycles.
- All IHC products are tested at their rated capacity to ensure stability and overall performance before shipment.
- Stroke: Available in stroke lengths of 15mm, 25mm, 50mm, 75mm, 100mm, and 125mm, covering a force range of up to 3500N.
- Precise and wide range of adjustments are possible with high-speed feeding at feed rates ranging from 0.015 m/min to 40 m/min. Feeding speed can be adjusted by external control knob.
- In addition to standard IHC24 series, other higher capacity products of IHC31 and 38 series are available according to the applications
- Temperature Ranges : Standard (-10~80°C), Special Customized (-30~100°C)
- Applied Fluid : Oil

Application

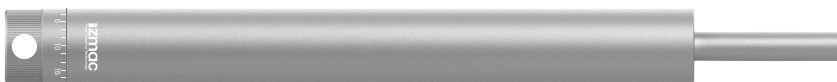
- IHC hydraulic feed control is the optimal solution for various applications such as sawing, cutting, drilling, and equipped with functions stick-slip prevention in pneumatic cylinders.
- Our products are optimized for drilling, tapping, and various cutting processes in industrial production. Izmac has ultimate goal to provide solutions of maximize our global customers' production efficiency , reduce process costs, competitive price.
- Based on engineering experties, Izmac also to provide customized, specialized product solutions which responds to customers specific needs.

IHC Series Ordering Information



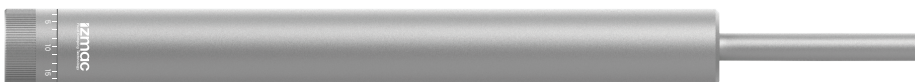
IHC 24 Series

Body Thread Size : 24
 Stroke : 15, 25, 50, 75, 100, 125



IHC 31 Series

Body Thread Size : 31
 Stroke : 40, 60, 100



IHC 38 Series

Body Thread Size : 38
 Stroke : 60, 100



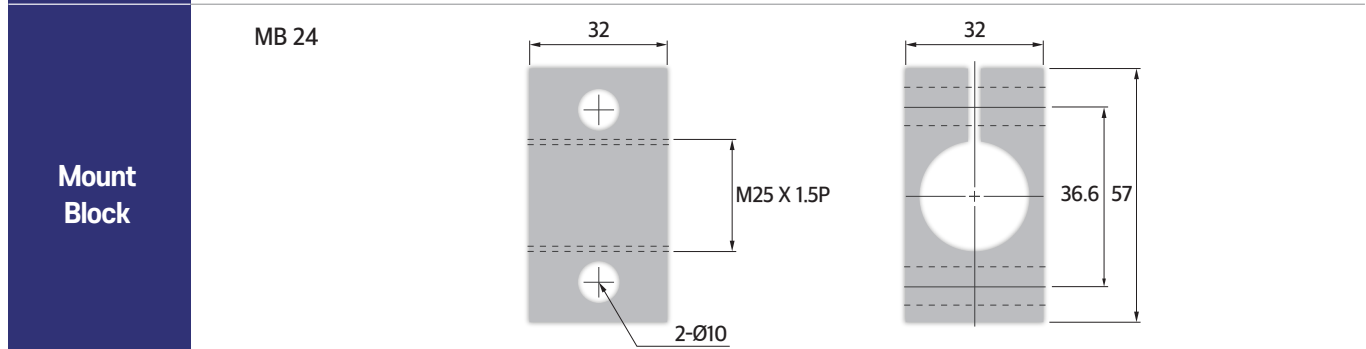
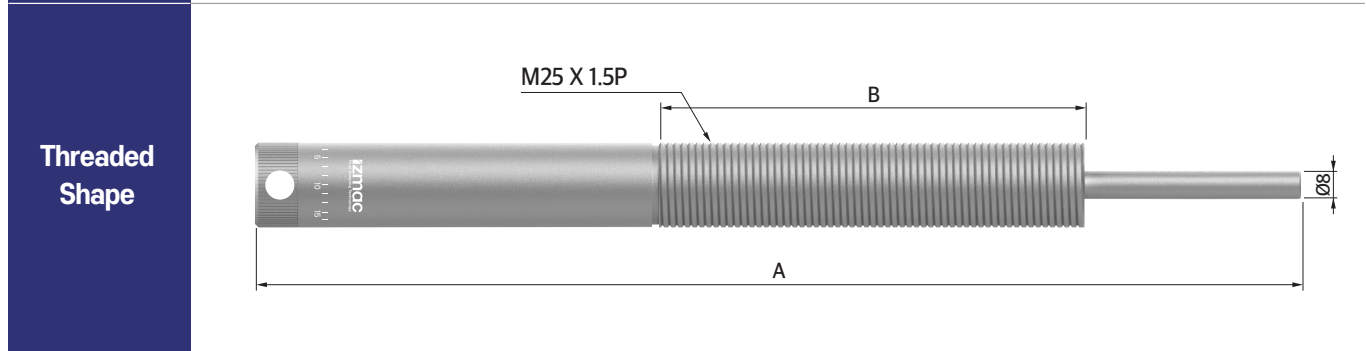
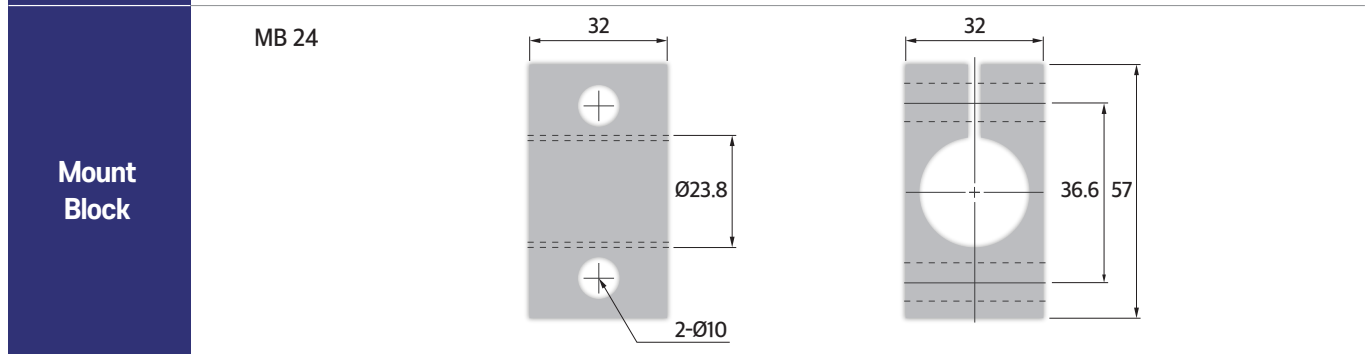
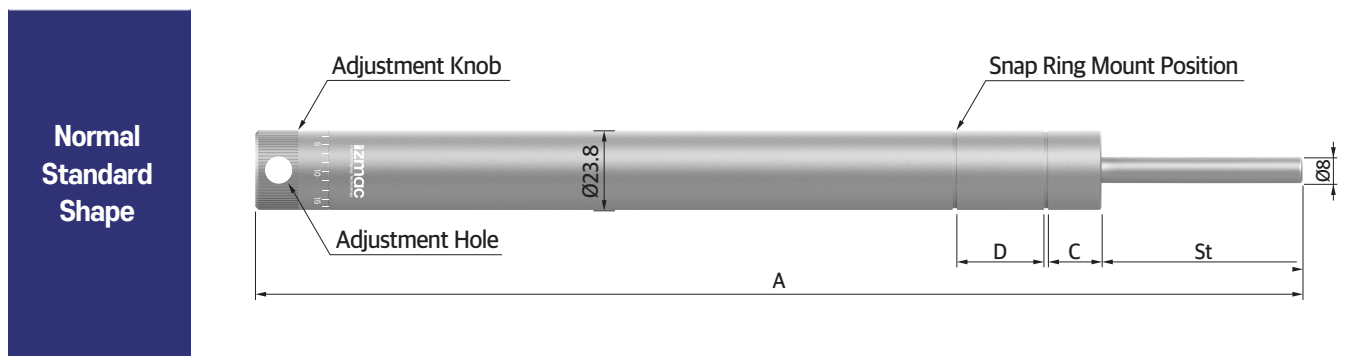
IHC 24 Step Check Unit (S)

Step Check Unit
 Body Thread Size : 24
 Stroke : 15, 25, 50, 75, 100, 125

IHC24 Series

Engineering Data & Dimensions

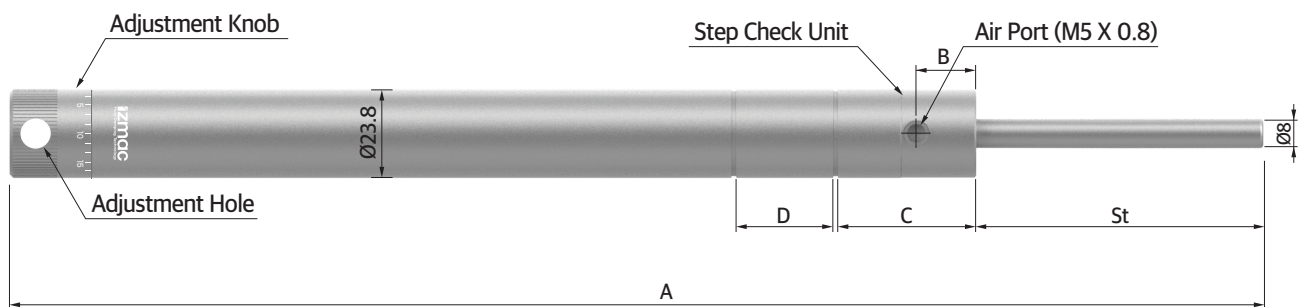
Model	Stroke (mm)	Dimension (mm)				Force (N)	Regulated Speed (m/min)	Max. Load Angle From (dig)	Weight (g)
		A	B	C	D				
IHC24-15	12.7	154	80	19	26	30~3,500	0.015-40	1.2	385
IHC24-25	25.4	197	110	19	26	30~3,500	0.015-40	1.0	450
IHC24-50	50.8	269	130	19	26	30~3,500	0.015-40	0.5	635
IHC24-75	76.2	345	150	19	26	30~3,500	0.015-40	0.2	745
IHC24-100	101.6	412	150	19	26	30~3,500	0.015-40	0.2	885
IHC24-125	127	495	150	19	26	30~3,500	0.015-40	1.2	885



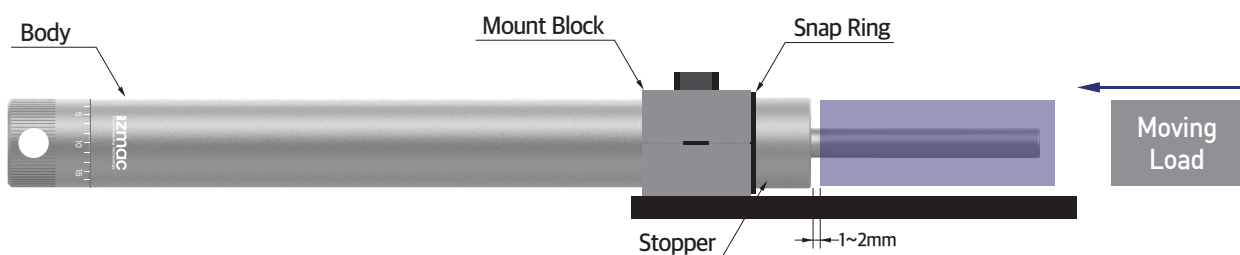
The Step Check Unit Series offers the same speed control capabilities as the Hydro Check, but also provides a step stop function at a desired location. When returning the stroke to the original position after stopping at the middle position, the piston rod automatically returns to the initial position, as approximately 5 bar of pressure is injected into the Air Port.

Engineering Data & Dimensions

Model	Stroke (mm)	Dimension (mm)				Max. Load Angle From (dig)	Force (N)	Regulated Speed (m/min)
		A	B	C	D			
IHC24-15S	12.7	180	13	36	26	Air Return	30~3,500	0.015-40
IHC24-25S	25.4	220						
IHC24-50S	50.8	260						
IHC24-75S	76.2	335						
IHC24-100S	101.6	400						
IHC24-125S	127	465						



How to install Hydro Check



Mount Block attachment is used when high thrust is applied, and the Snap Ring can be used to prevent the product from being pushed back.

※ Cautions

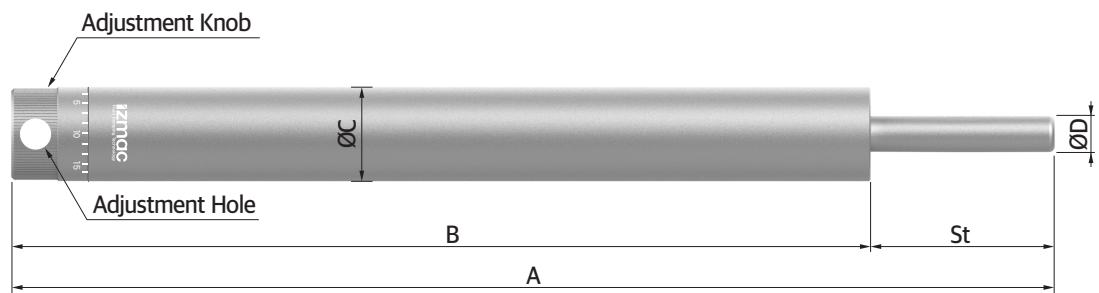
1. Do not tighten or process the Hydro Check Body with bolts. (Contact the head office if necessary.)
2. When attaching the Hydro Check, refer to the diagram in the catalog for the attachment angle. If the attachment location deviates, uneven wear may occur, shortening the Hydro Check's lifespan and it can damage the device.

IHC31/38 Series

Engineering Data & Dimensions

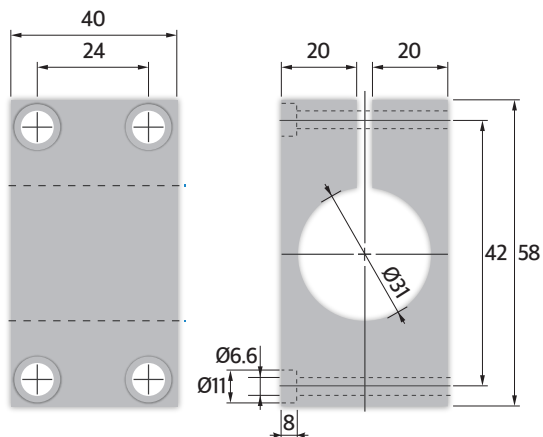
Model	Stroke (mm)	Dimension (mm)				Force (N)	Regulated Speed (m/min)	Max Load Angle From Axis	Weight (g)
		A	B	C	D				
IHC31-40	40	270	230	31	12	450~3,500	0.015-40	1	1,040
IHC31-60	60	340	279	31	12	450~3,500	0.015-40	0.5	1,245
IHC31-100	100	476	375	31	12	450~3,500	0.015-40	0.3	1,655
IHC38-60	60	321	261	38	14	1,500~3,500	0.015-40	0.5	2,490
IHC38-100	100	454	354	38	14	1,500~3,500	0.015-40	0.3	3,310

Normal
Standard
Shape



Mount
Block

MB 31



MB 38

